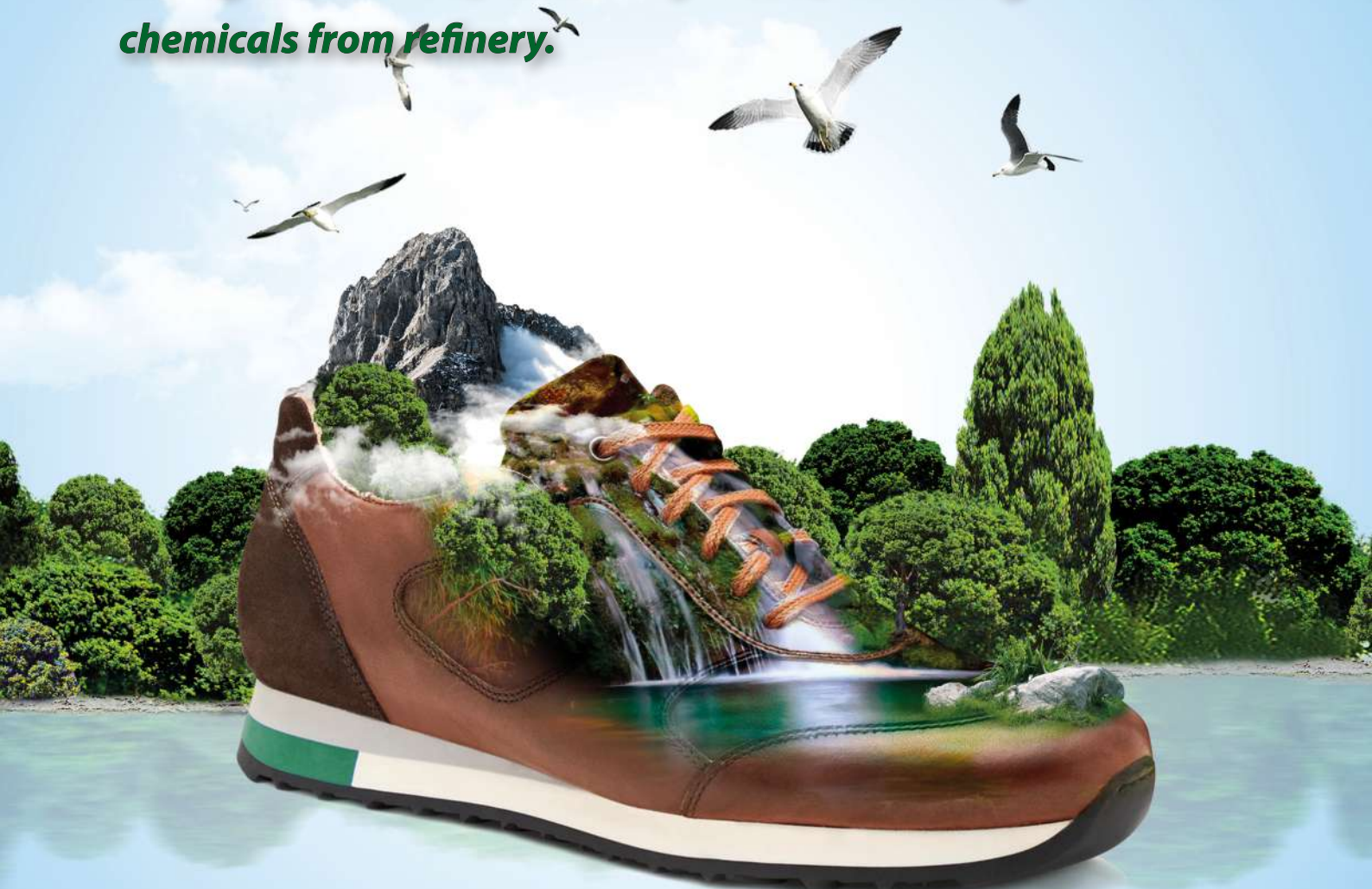


# Bio-Based Synthetic Leather for Footwear

- *Sustainable; low consumption of petroleum/fossil resources*
- *1000 kgs of product for which minimum 200 kgs of is not produced from petroleum - huge saving of fossil resources for the future of planet*
- *Ecological; low CO<sub>2</sub> emission product, due using low amount of chemicals from refinery.*





**İSTANBUL / TURKEY**



**13 MILLION MT YEARLY PRODUCTION CAPACITY**



**MANAGES SUSTAINABLE SYSTEMS WITH ALL EXPERIENCED, FLEXIBLE AND INNOVATIVE TEAMS**



Gezderi Sentetik Deri San. ve Tic. A.Ş., established in 1995, has a closed area of 25.000m<sup>2</sup> plant in İstanbul, with a capacity of 13 million meters of synthetic leather and polymer coated fabric, produces mainly for technical textile industry.

All productions are sensitive to human and environment. Banned solvents or chemicals (DMF etc.) neither bought nor allowed to be used during productions and in all plant area, as a company policy.

Gezderi team manages all production processes with sustainable and ecological sense of responsibility with motto;

**“NATURE IN OUR CHEMISTRY”**

For further information about the product range and availability please write to:  
**geztech@gezderi.com**

**GTGEZTECH**

as technical product brand of

**GEZDERİ**

**GEZDERİ SENTETİK DERİ SANAYİ TİCARET A.Ş.**  
Akçaburgaz Mah. Osmangazi Cad. No:5 Esenyurt /İstanbul  
Tel : (90 212) 886 79 69 (Pbx) Faks: (90 212) 886 79 77  
www.gezderi.com info@gezderi.com

